

# 17 Apr 2020 - SquaredUp Business Continuity Dashboards

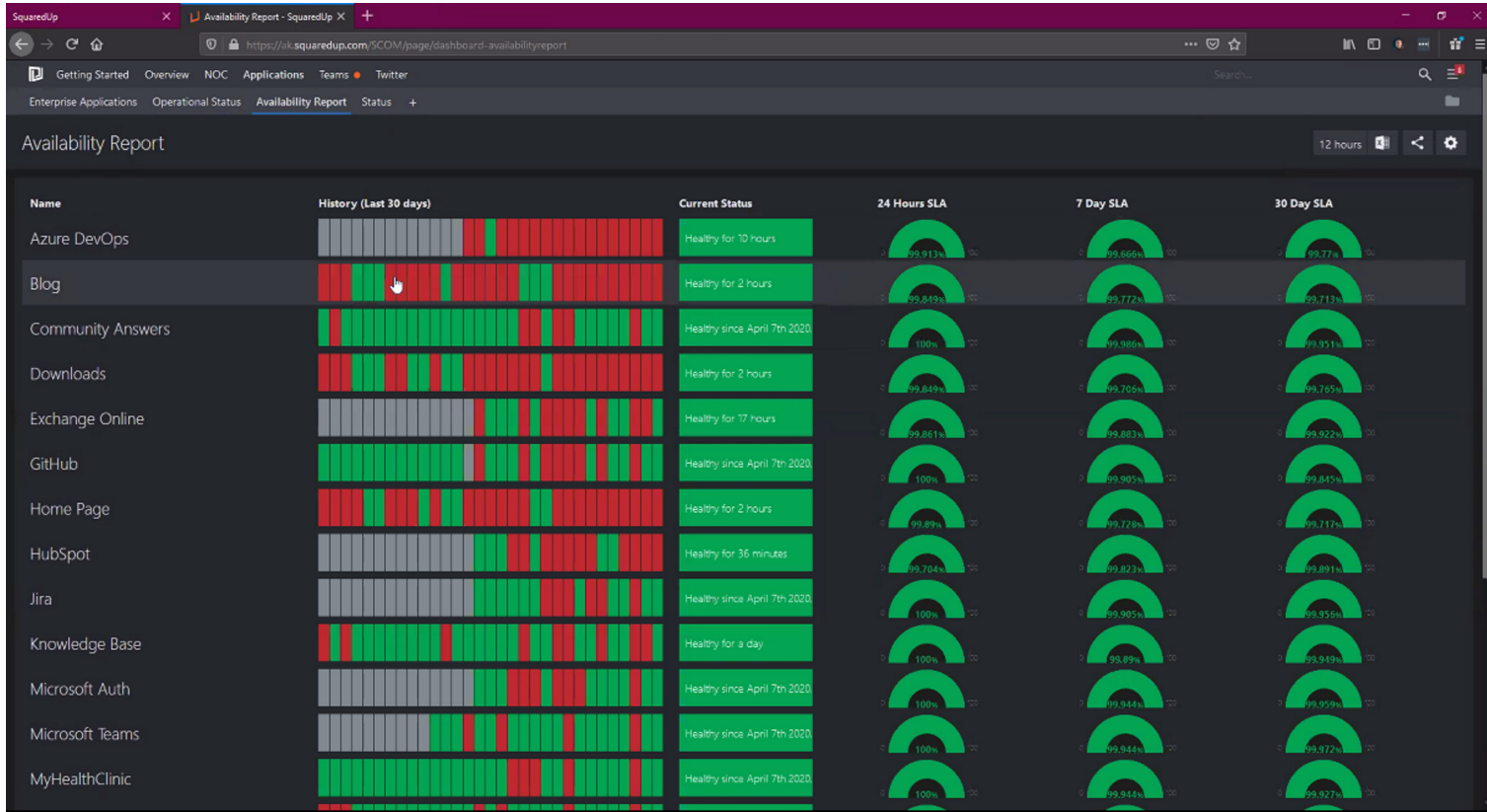
Thursday, April 9, 2020 12:04 PM

SquaredUp dashboards allow powerful dashboards to be built using pre-built, community packs, and 3rd party packs for managing key enterprise tools.

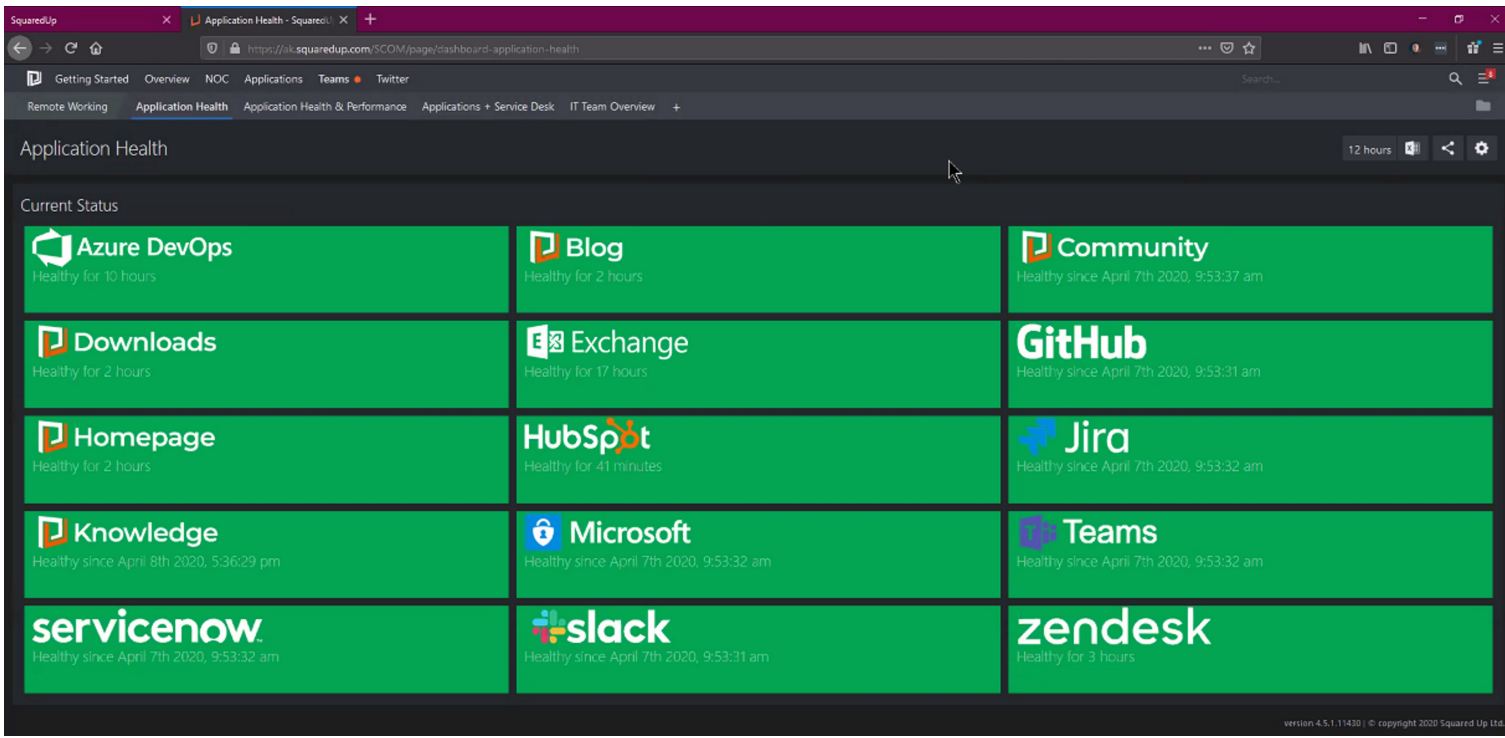
Can add Splunk/Solarwinds/Azure insights  
ServiceNow/ServiceDesk ITSM capabilities

## Business Continuity dashboards

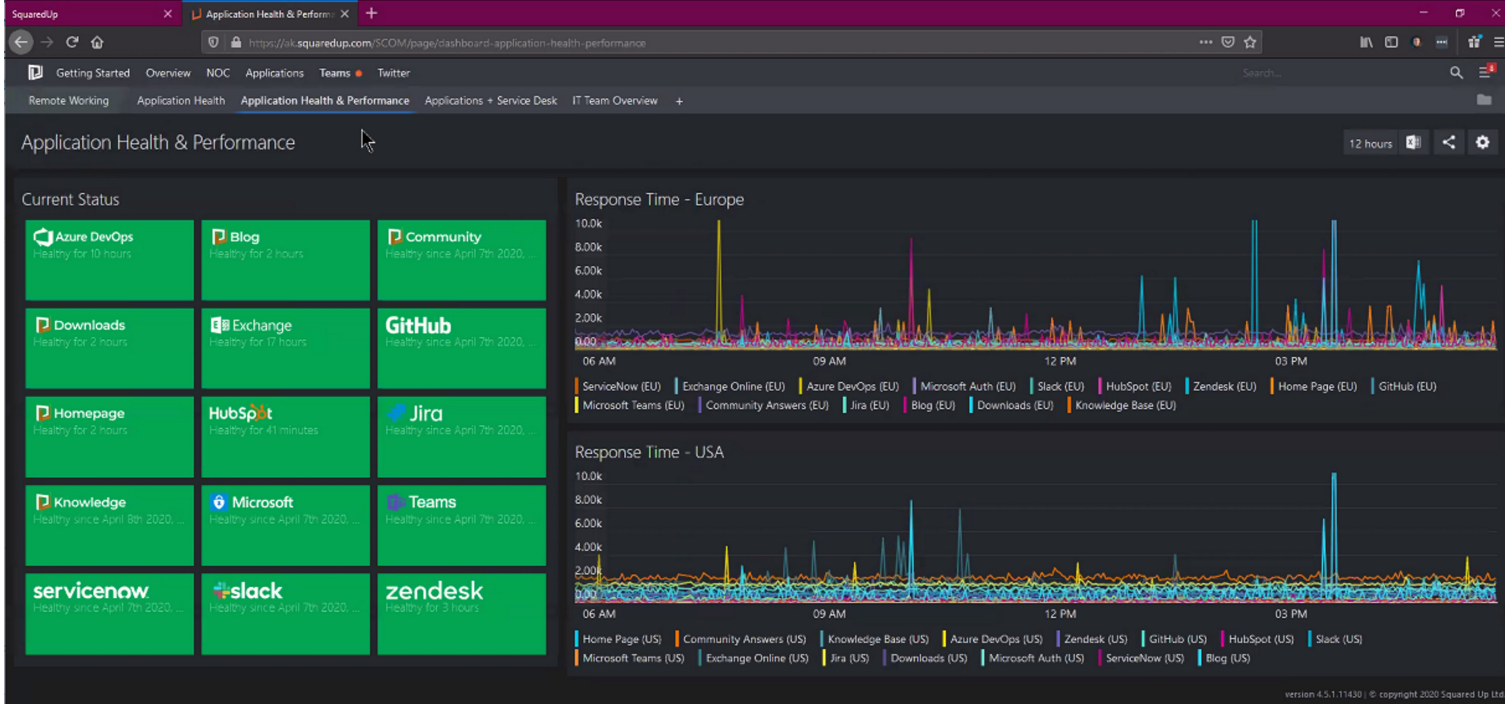
List top apps with SLA's



Simpler form for leadership

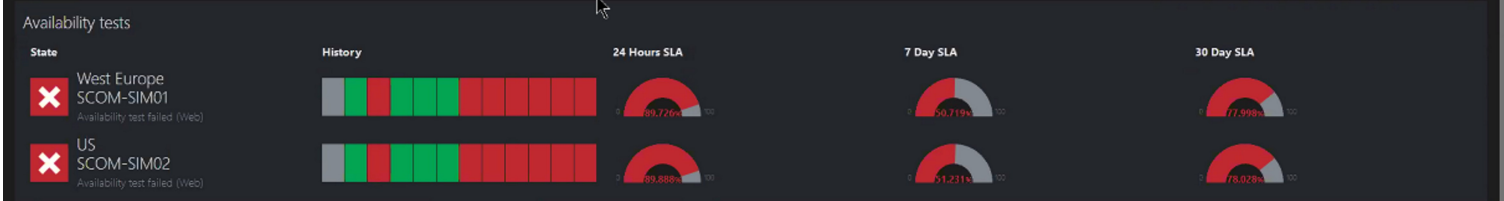


Dashboard of App Health and response time performance



Drill into response time measured by Enterprise application

# Availability go to drilldown 12 hours



### Outside-In Response Times (Pingdom)

Name	Host	Type	IPv6	Latest Check	Response (ms)	State
Sales App Web Check - Europe	sales.squaredup.com	http	false	a minute ago	0	down
Sales App Web Check - Asia	sales.squaredup.com	http	false	a minute ago	0	down
Sales App Web Check - South America	sales.squaredup.com	http	false	a minute ago	0	down
Sales App Web Check - North America	sales.squaredup.com	http	false	a minute ago	0	down

