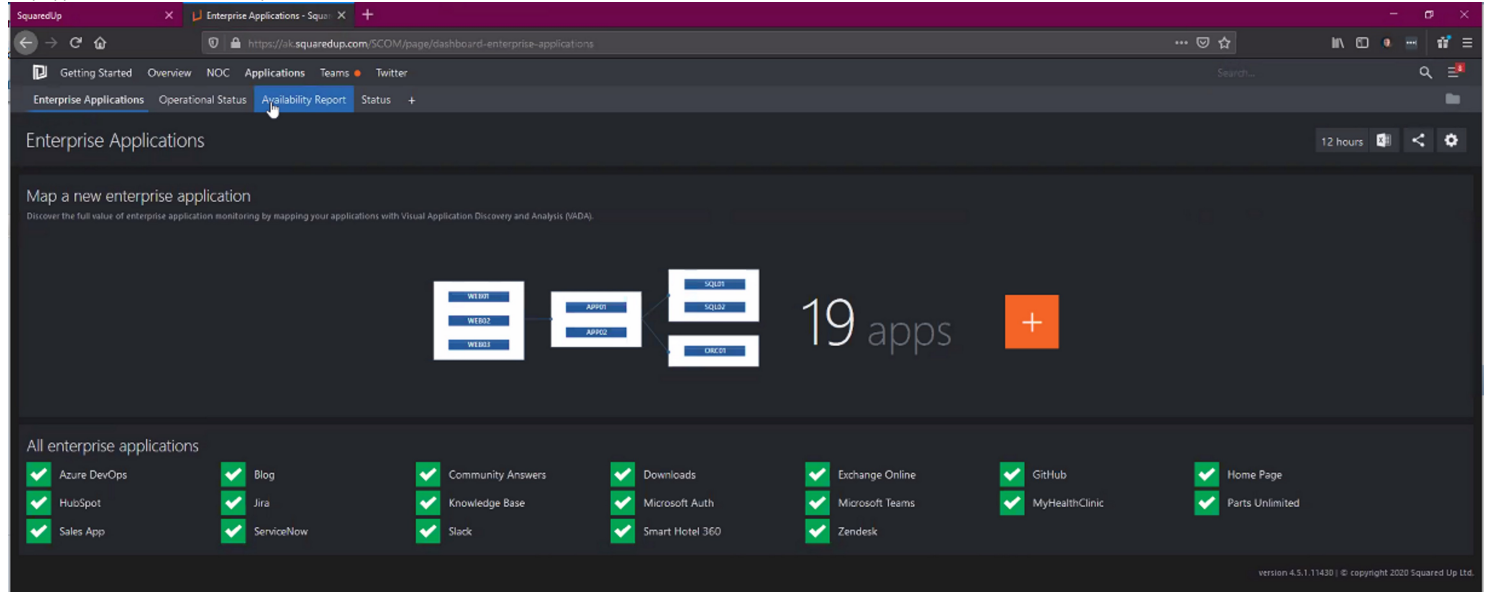


# 17 Apr 2020 - EAM - Enterprise Application Mapping

Friday, April 17, 2020 3:38 PM

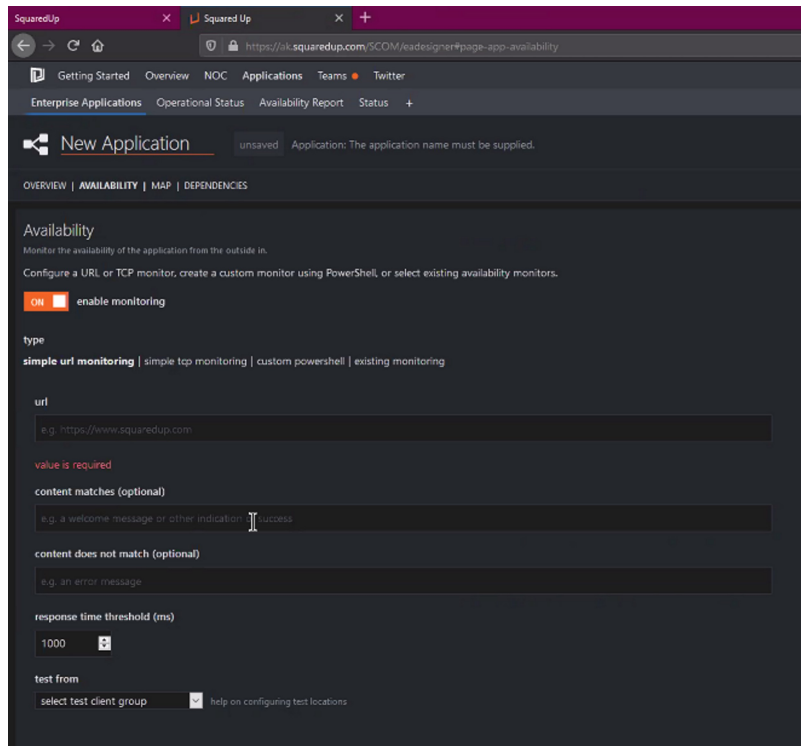
## Enterprise Application Mapping

Map applications and monitor components end to end



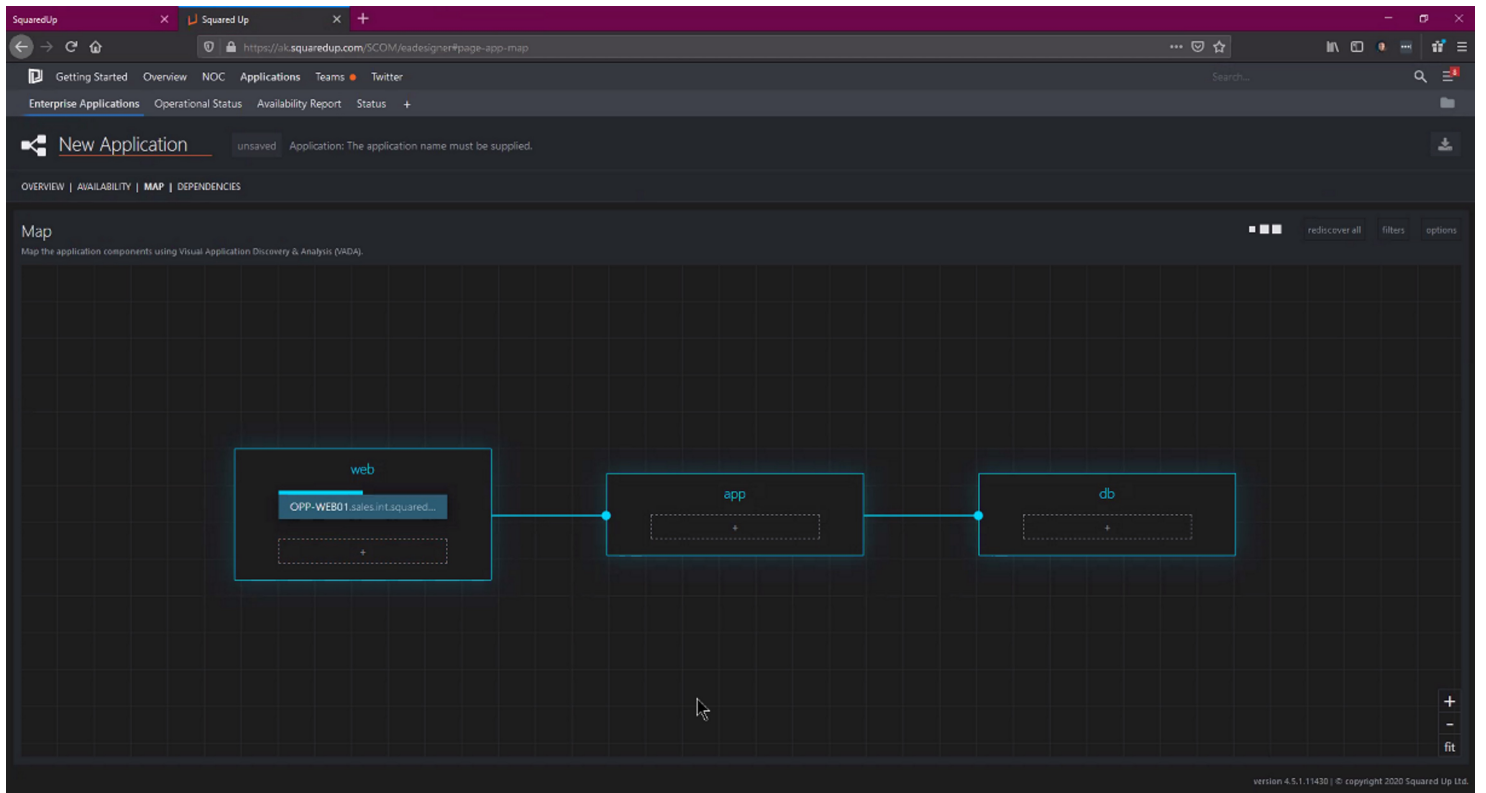
## Delve into how you want to configure monitoring

- URL, TCP monitoring
- Custom powershell script
- Existing (SCOM pack)

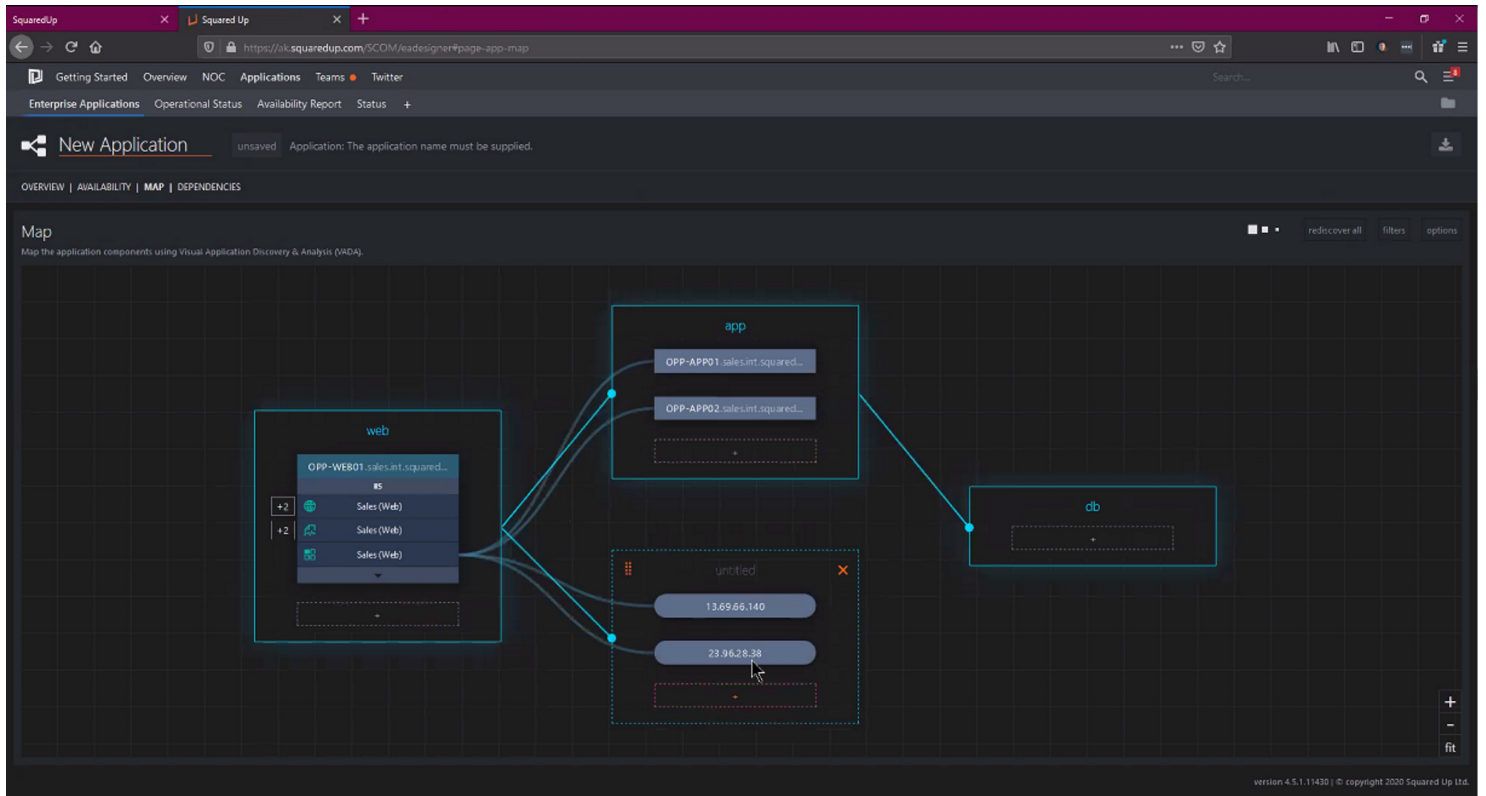


## Build out application map

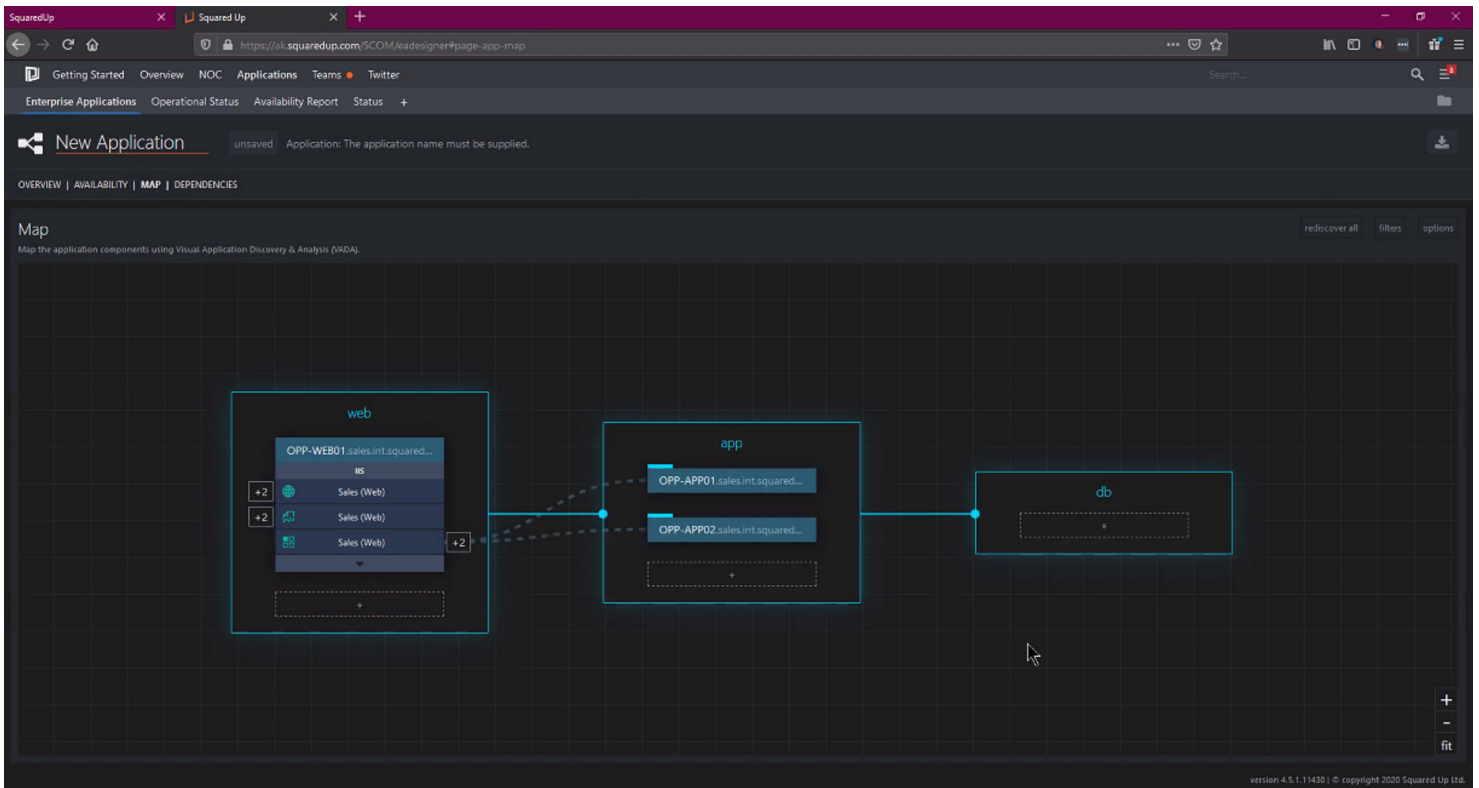
Start with server, drill into how it communicates for the next few slides



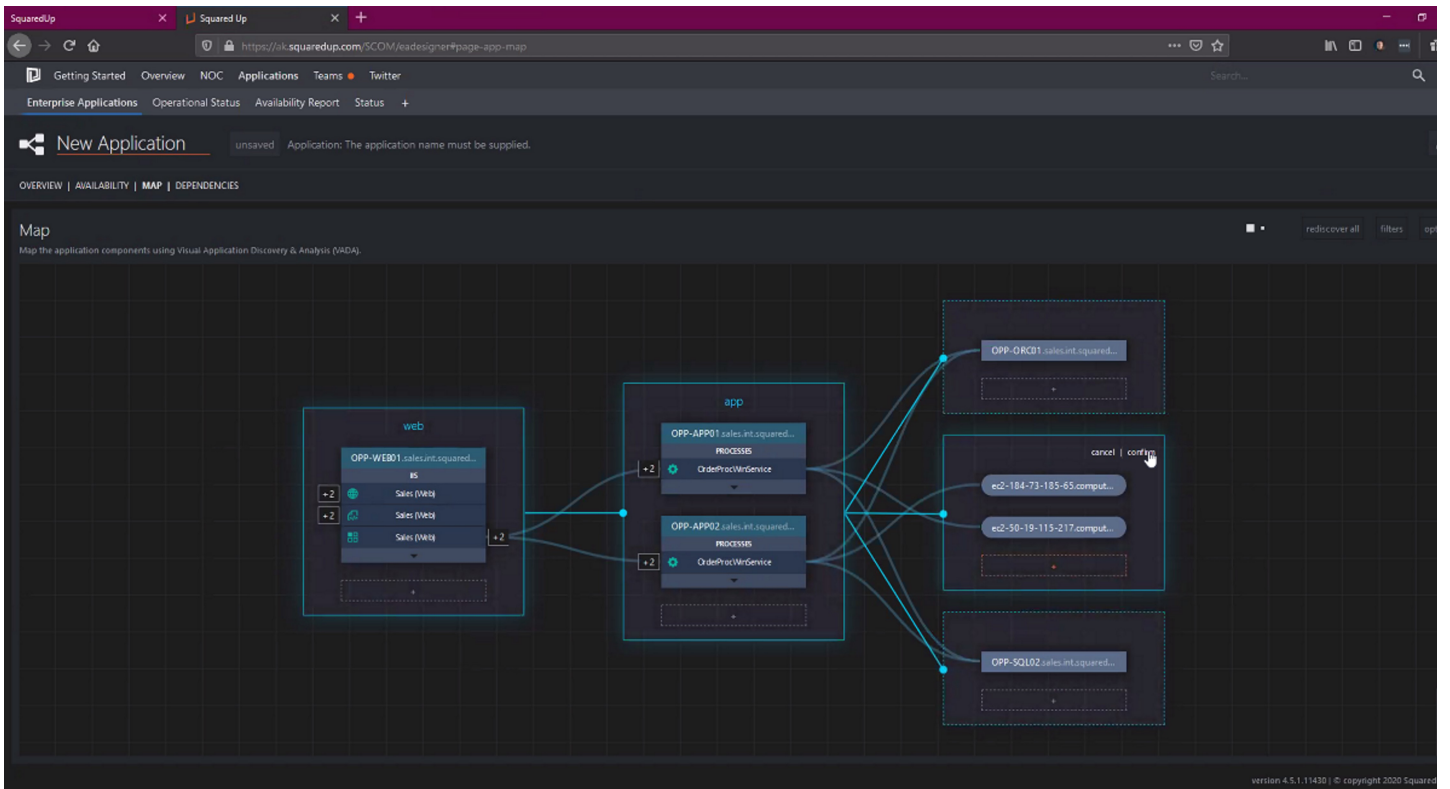
Web server talks to 2 servers



Drill into server/communication to see who web server talks to

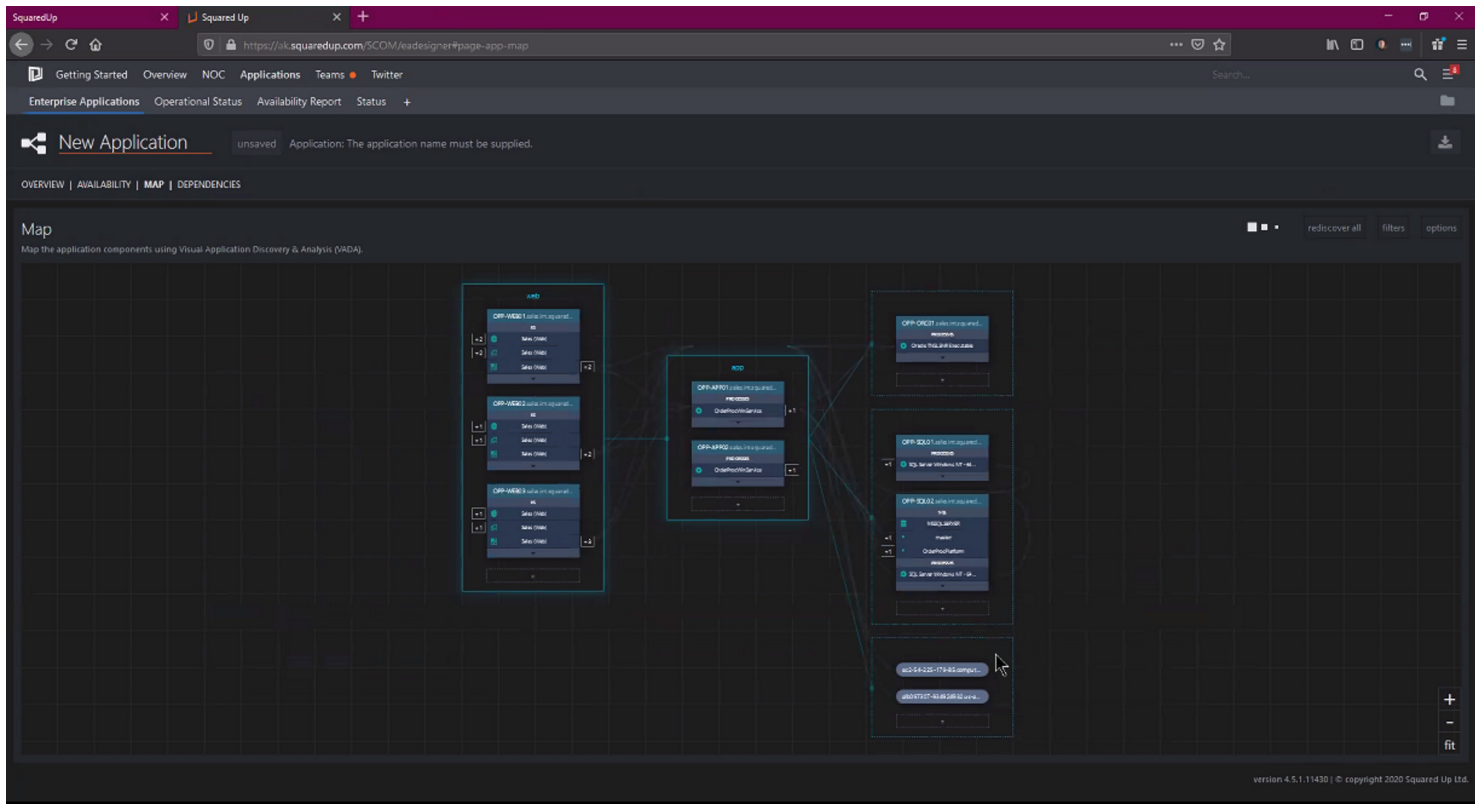


Drill into service



Determine other web servers in application flow

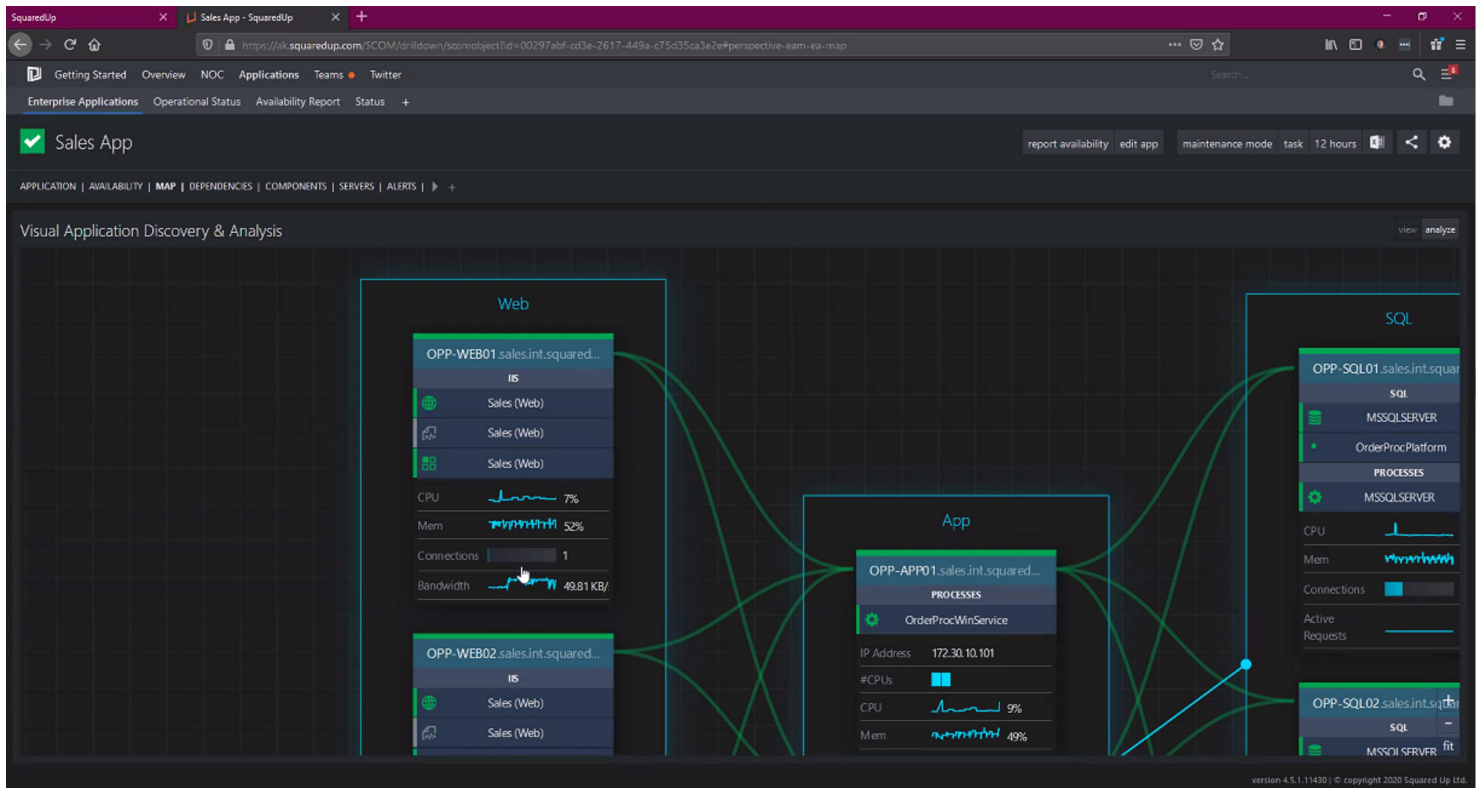




## Final application dashboard

Alert	Component	Severity	Time
Application Pool worker process is unresponsive	Sales (Web)	New	19 hours ago
Application Pool worker process is unresponsive	Sales (Web)	New	19 hours ago
Power Shell Run space Failed to start	OPP-ORC01.sales.int.squaredup.com	New	April 8th 2020, 10:01:56 am
MSSQL 2016: Monitoring warning	OPP-SQL01.sales.int.squaredup.com	New	April 7th 2020, 4:15:01 pm

View VADA discovery analysis



## Recover services

Allow access to run tasks

Example - restart IIS, Windows services, reboot virtual machines (with VMWare pack)

The screenshot shows the 'execute task' interface in SquaredUp for the 'OrderProcWinService' on the 'OPP-APP01.sales.int.squaredup.com' node. The task 'Stop Service' has been executed successfully.

**Task results:**

```

The task completed successfully. The output is shown below:
Waiting for service 'Squared Up Sales App WCP service (OrderProcWinService)' to stop...
Waiting for service 'Squared Up Sales App WCP service (OrderProcWinService)' to stop...
Waiting for service 'Squared Up Sales App WCP service (OrderProcWinService)' to stop...
Waiting for service 'Squared Up Sales App WCP service (OrderProcWinService)' to stop...
  
```

**Hosting Stack:**

- OrderProcWinService
- Dependencies Node
- OPP-APP01.sales.int.squaredup.com

**Properties:**

ServiceName	OrderProcWinService
CheckStartupType	False
ObjectStatus	System.ConfigItem.ObjectStatusEnum.Active
DisplayName	OrderProcWinService
PrincipalName	OPP-APP01.sales.int.squaredup.com

**Classes:**

- Enterprise Application Windows Service Monitoring Configuration
- Perspective
- Logical Entity

# Drilling into application network traffic

The screenshot displays the SquaredUp Visual Application Discovery & Analysis (VADA) interface. The browser address bar shows the URL: <https://ak.squaredup.com/SCOM/drilldown/scomobject?id=c9b5ca61-119b-e4f7-664a-4e80d850c5c6#perspective-objects-vada>. The page title is "OPP-SQL02.sales.int.squaredup.com".

The main content area is titled "Visual Application Discovery & Analysis (VADA)". It features a dark-themed grid with several application components:

- OPP-APP02.sales.int.squaredup.com**: A process box containing "OrderProcWinService" with a "+3" indicator.
- OPP-SQL01.sales.int.squaredup.com**: A process box containing "MSSQLSERVER" with sub-items "master" and "OrderProcPlatform", and "PROCESSES" containing "SQL Server Windows NT - 64...".
- OPP-SQL02.sales.int.squaredup.com**: A process box containing "MSSQLSERVER" with sub-items "master" and "OrderProcPlatform", and "PROCESSES" containing "SQL Server Windows NT - 64...".

Red lines and arrows indicate network connections between these components. A red 'X' icon is visible on one of the connection lines. The interface includes navigation tabs at the top (Getting Started, Overview, NOC, Applications, Teams, Twitter) and a search bar. The bottom right corner shows the version: "version 4.5.1.114301 © copyright 2020 Squared Up Ltd."

migrations, mgmt groups